

# METAMORPHIC AURA

THE | BEAUTY | FORECAST  
AUTUMN/WINTER 18





# INTRODUCTION

With the days cooling and the nights lengthening, winter begins to emerge, the icy-wind and frozen scenes have the whole world in awe. The crystal like icicles start to form and the streets get covered in a spiritual crisp aura, close at hand with the temperature dropping and the colder colours arriving.

This trend is using the cold winter hues and taking them for a spin – nearing the end of 2017, Season 7 of Game of Thrones will be released: the white, frozen, crystal like motif will be a key influence to the fashion and beauty world in 2018. Alongside this, a critical character that wins the hearts of the whole fan base: Daenerys Targaryen, a beautiful girl with skin and hair as white as snow. In contrary to this, The Night King - leader of the White Walkers, enemy to many.

With the metallics trend becoming a forefront to every element this season the concept is going to remain apparent, however, this time with a slightly cooler tone and more diversity. Not only will iridescents alone become a staple in everyone's make up bags but also the hues and colours that make up the concept will become increasingly popular and with more divergence in regards to what goes where.

## SEASONAL|STATEMENTS

**|Neon Pastels** - Being able to apply this concept to every aspect of the face, whether it be sheer pinks on the lid or vibrant pearly fuchsia on the cheeks

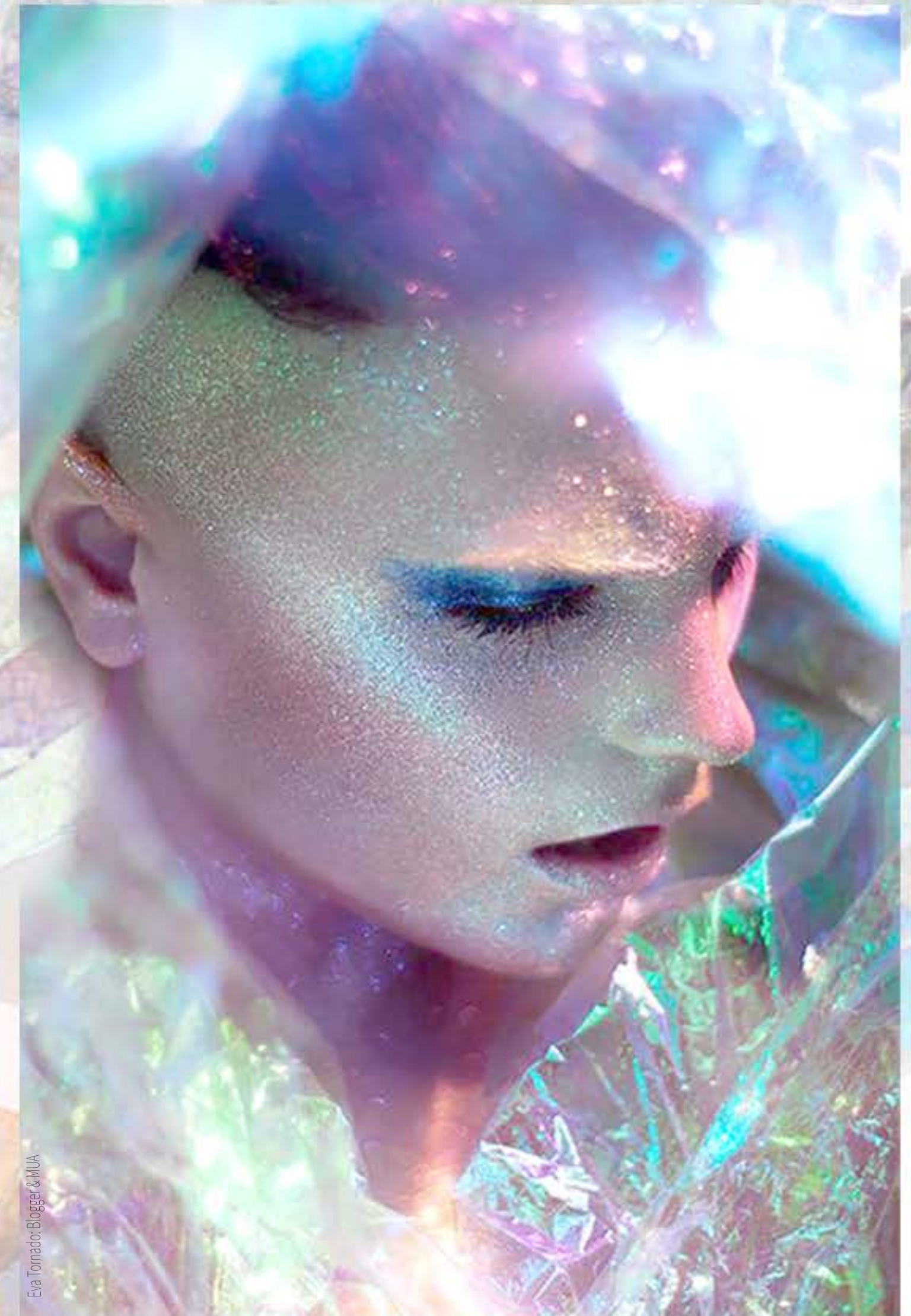
**|Glossy Vibes** - Striving away from the typical area you associate with 'gloss' and going towards something more modern and crystalline, with a dewy base and glossy, almost wet look eyes.

**|White Light** - With a heavy influence from Game of Thrones; the standard ideology of being true to your roots is flipped on its head, with eyebrows and eyelashes becoming unnaturally white.

*WINTER IS COMING...*



|ETHEREAL|

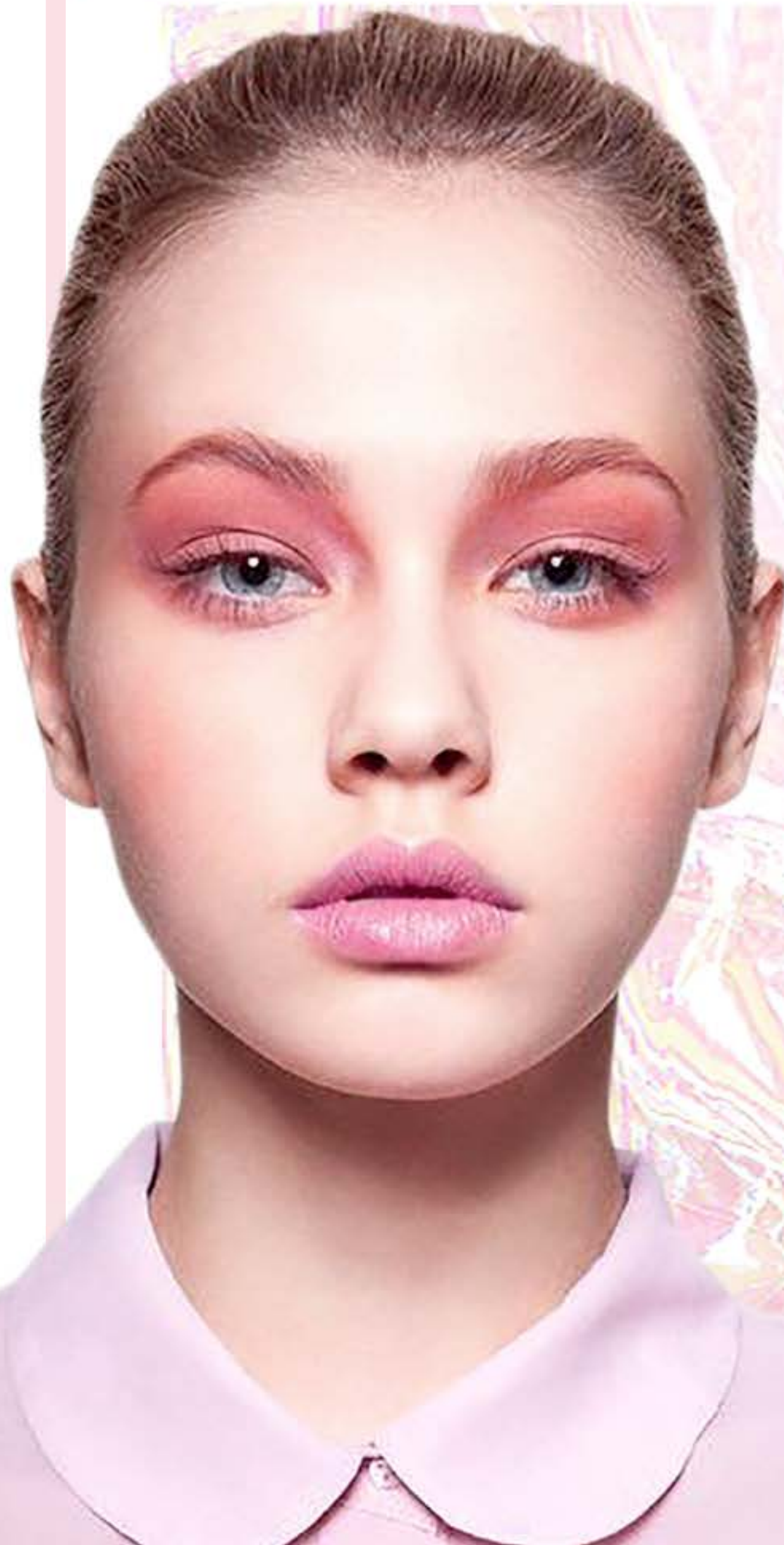


Eva Tomaco: Blogger & WUA



|ROMANTIC|

EYES



Anne Sophie Costa: Make Up Artist



Natasha Denona: Make Up Artist



This typical feminine, romantic style fits in well with the concept; with pale pinks all over the lid blended seamlessly into the brow bone, this all seems to abide by the stereotypical “girly” vibe that this page denotes, however, despite this, the look will take an edgier twist. To do so a gloss will be added over the top to give the concept a little bit more dimension, which corresponds well with the overall theme of metamorphic rocks.

Alongside that, this look will be worn with an outfit that would be completely opposite to what is expected, for example studs and leather or a grungier vibe.

|MINIMAL|



# BROWS + LASHES



Natalie Ventola: Make Up Artist

|OPALIZED|



derkind Show A/W 10

To accompany the pretty colour pallet used on the eyes, the other elements to the look will have a more obvious distinction. Block white eyebrows and eyelashes will complement the subtle tones on the eyes. When combined, the whole look will give off a slight opal texture and finish. This aspect is heavily inspired by the

upcoming season of Game of Thrones

as well as Angel Aura Quartz. This

look appeared on the catwalk

show of Wunderland in A/W 10

(picture on the far left). Despite

this, the look was only really

touched on in fashion and those

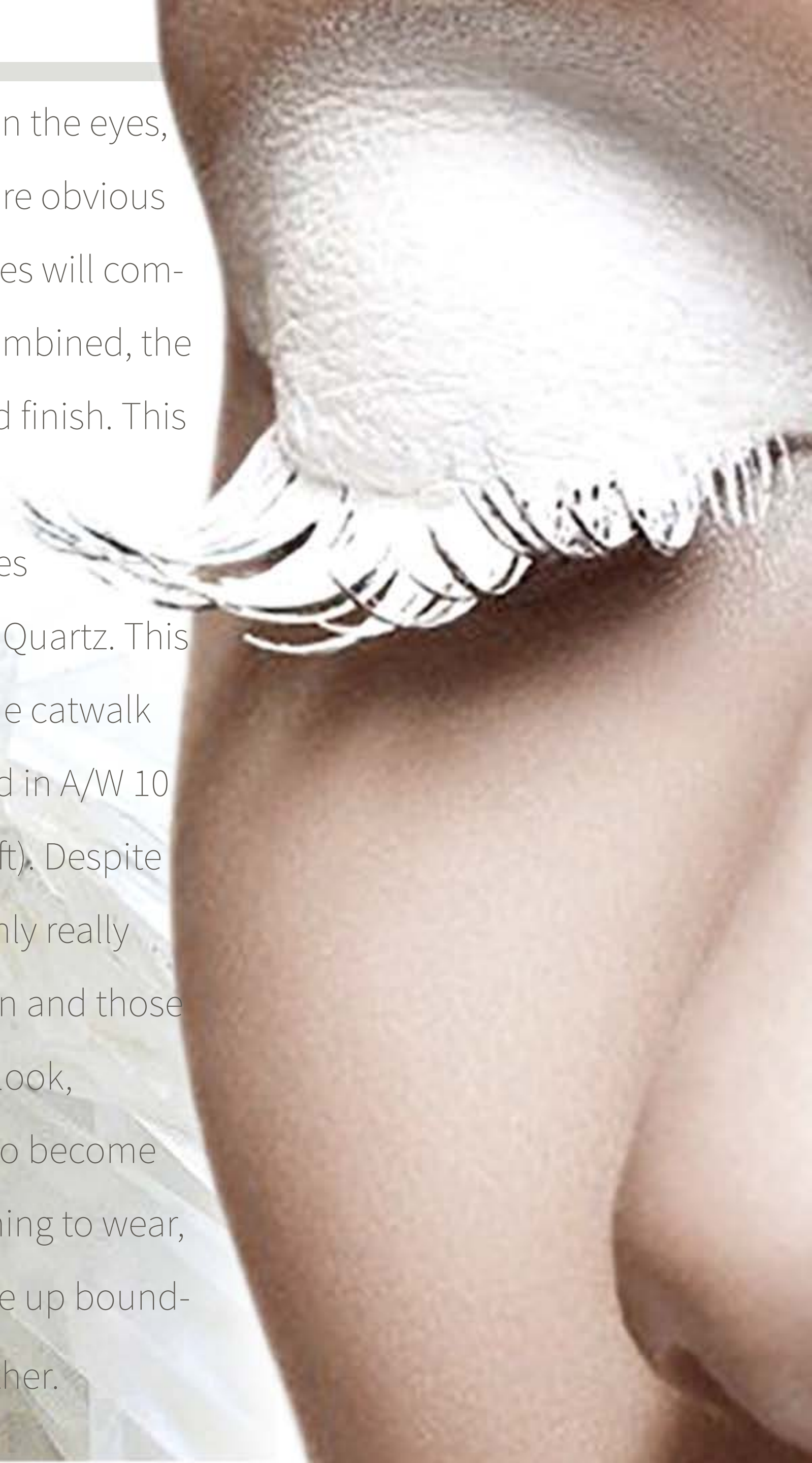
that have an edgier look,

however it is going to become

more of a popular thing to wear,

simply because make up bound-

aries are being pushed further and further.





# FACE

Similarly to the eyes the base will have a very dewy finish with a glow that seems as though it is radiating from deep within. Albeit a very high coverage look (due to the time this trend will be popular) it will have a very natural essence to it. Mixing an illuminator such as Cover FX 'Celestial' in with an everyday foundation will give the desired effect



Kerstin Dormwand: Make Up Artist, Institute Magazine

|AQUEOUS|



# CHEEKS

The highlight on the cheeks has taken a very different turn, a turn that is representing the theme as a whole; an element of angel aura quartz, this crystal alone epitomizes the iridescent side of this trend. The concept may seem very extreme for everyday wear, however in recent years a lot more has become socially acceptable in regards to make up, nevertheless a more natural option is available with only a slight colour change – Anastasia Beverly Hills ‘Moonchild’.



|INTENSITY|

@killahcamz



@TerryBarbaronBeauty



@JamesCharles



@glamariemwaits





Neon pastels was the theme behind the lip choice - it incorporates the main colours that are seen in iridescent crystals. Still very bright but also have a slightly subdued tinge to them, out of all the looks this aspect is the most wearable but also the most noticeable in regards to the trend, almost anyone (not only the daring) could wear it and pull it off, as there is such a wide variety of colours and tones to choose from. 'Blast O' by Mac is a very diluted cobalt blue for example (right).

LIPS

| NEON PASTELS |





'Capturing Resonance' is an installation made by an artist named Soo Sunny Park who collaborated with Spencer Topal, whom of which is a sound artist. This installation can be seen in DeCordova Art gallery in Massachusetts where the natural light reflects off thousands of acrylic iridescent Plexiglas squares to create an incredible atmospheric, ever changing soundscape. The shift in light becomes a sculpture in itself and also a symbol of transient physical and psychological states.

# 'CAPTURING RESONANCE'





It is clear to see that the colour theme throughout is a combination of very muted neon shades that sit alongside the pastel equivalent. All of these colours are either present in forms of metamorphic rocks or are the different colours shown in iridescent textures, the image on the left is an example of this. These shades would be perfect for Autumn/Winter 18 as they all have a very cool hue to them which corresponds well with the colours and tones seen around that time of year.

PANTONE WHITE

PANTONE 7436

PANTONE 705 C

PANTONE 7422 C

PANTONE 245 C

PANTONE 5295 C

PANTONE 536 C

PANTONE 420 C

PANTONE 317 C

PANTONE 7472 C



AUTUMN/WINTER 18

# METAMORPHIC AURA

